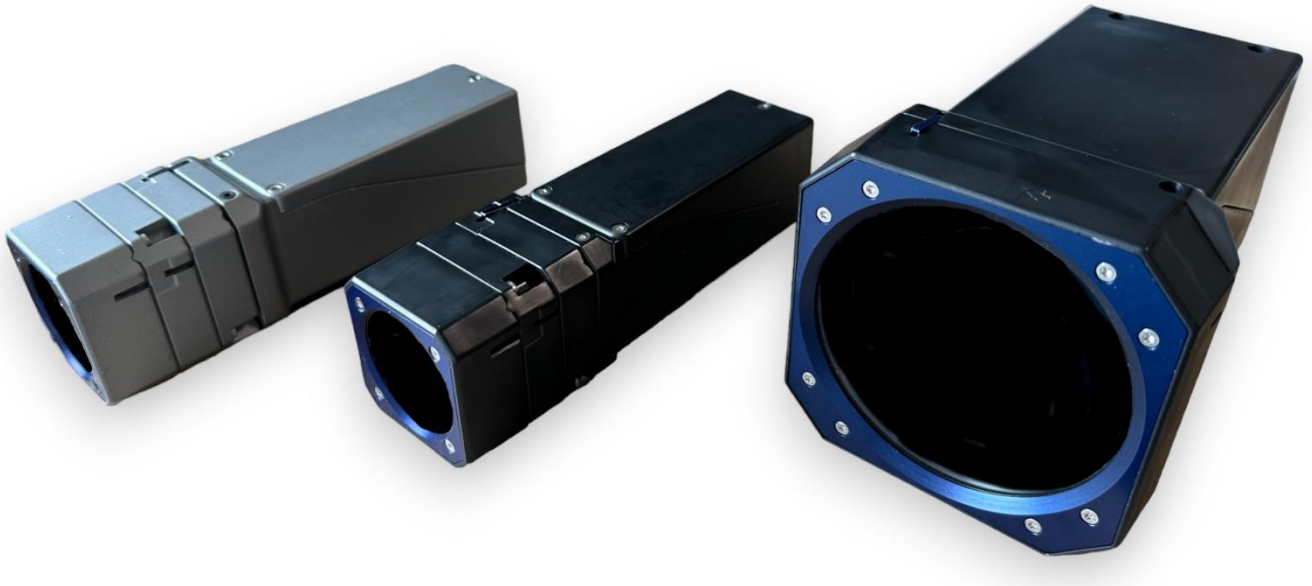




MVEC Series



The Machine Vision Camera Housing is designed to be compatible with a wide range of machine vision camera brands, including Daheng Imaging, FLIR, IDS Imaging, Allied Vision, Basler, and many others. This versatile housing provides exceptional protection against moisture and dust, ensuring the longevity and reliability of your camera equipment in various industrial environments.

One of the key features of this housing is its ability to prevent unauthorized adjustments to lens settings, maintaining the integrity of your camera's configuration. The enclosure has undergone rigorous testing under IP67 conditions, demonstrating its durability and effectiveness when used with GigE, USB3, and I/O cables.

In addition to its protective capabilities, this housing is also the most cost-effective option on the market, offering superior value without compromising on quality. The unbranded design of the housing allows you to create brand awareness by labeling it with your own company logo, making it a customizable solution that can be tailored to your specific needs.

By incorporating this industrial machine vision camera enclosure into your setup, you can significantly enhance the robustness and reliability of your machine vision solution, ensuring optimal performance even in challenging conditions.



Technical specifications

	VA4-MVEC-167-ALU	VA4-MVEC-167-IP	VA4-MVEC-267-IP
Material			
Body	Aluminum	Industrial Polymer	Industrial Polymer
Lens Cap Shield	Aluminum	Aluminum	Aluminum
Adapter Plate	Aluminum	Aluminum	Aluminum
Mounting Plate	Aluminum	Aluminum	Aluminum
Seals	Rubber	Rubber	Rubber
Window	Gorilla Glass	Gorilla Glass	Gorilla Glass
I/O Plug	Industrial Polymer	Industrial Polymer	Industrial Polymer
Dimensions (mm)			
Height	55.8	55.8	101.5
Width	52.5	52.5	100.9
Depth	148.8	148.8	225.6
Max. Camera Size	29 x 29	29 x 29	44 x 44
Max. Lens Diameter	40	40	74
Max Lens length	105 (4 Extension Rings)	105 (4 Extension Rings)	108 (6 Extension Rings)
Other			
Weight (gram)	490	230	760
Locking type lens tube	Bayonet mounting	Bayonet mounting	Bayonet mounting
IP Degree of protection	IP67	IP67	IP67
Included extension rings	2	2	4
Device Composition	Mounting plate / Heatsink Adapter plates Lens cover Lens tube extension rings Body Cable entry I/O Blank plug		
Product Certifications	Reach RoHs		
Storage Temperature	-15 ~ 40 °C		
Operating Temperature (mounted on metal surface)	0 ~ 45 °C		
Operating Temperature (not mounted on metal surface)	0 ~ 35 °C		
Extras	Lens tube extension rings Flat screw set Anti shatter front glass (On request)		



Camera Lens Compatibility

Camera Series	Lens Setup	VA4-MVEC-167 (2023)	VA4-MVEC-167 (2023 >)	VA4-MVEC-267
MER/MER2	C-Mount Lens < Ø30mm	Yes	Yes	Yes
	C-Mount Lens Ø30mm >< Ø40mm	Yes (1)	Yes (1)	Yes
	C-Mount Lens > Ø40mm	No	No	Yes
	C-Mount Lens > Ø74mm	No	No	No
	M12 lens > 4MM Focal Length	Yes	Yes	Yes
	M12 lens < 4MM Focal Length	Yes (2)	Yes (2)	Yes
ME2S / MER3 (2)	C-Mount Lens < Ø30mm	No	No	Yes
	C-Mount Lens Ø30mm >< Ø40mm	No	Yes (1)	Yes
	C-Mount Lens > Ø40mm	No	No	Yes
	C-Mount Lens > Ø74mm	No	No	No
	1/2" Sensor > 8MM Focal Length	No	Yes (1)	Yes
	2/3" Sensor > 12MM Focal Length	No	Yes (1)	Yes
	1" Sensor > 6MM Focal Length	No	No	Yes
	1" Sensor > 16MM Focal Length	No	Yes (1)	Yes
	1.2" Sensor > 8MM Focal Length	No	No	Yes
	1.2" Sensor > 16MM Focal Length	No	Yes (1)	Yes
ME2P	C-Mount Lens < Ø74mm	No	No	Yes
	C-Mount Lens > Ø74mm	No	No	No
	1/2" Sensor > 4MM Focal Length	No	No	Yes
	1" Sensor > 6MM Focal Length	No	No	Yes
	1.2" Sensor > 8MM Focal Length	No	No	Yes
MARS	All	No	No	No
VEN	All	No	No	No

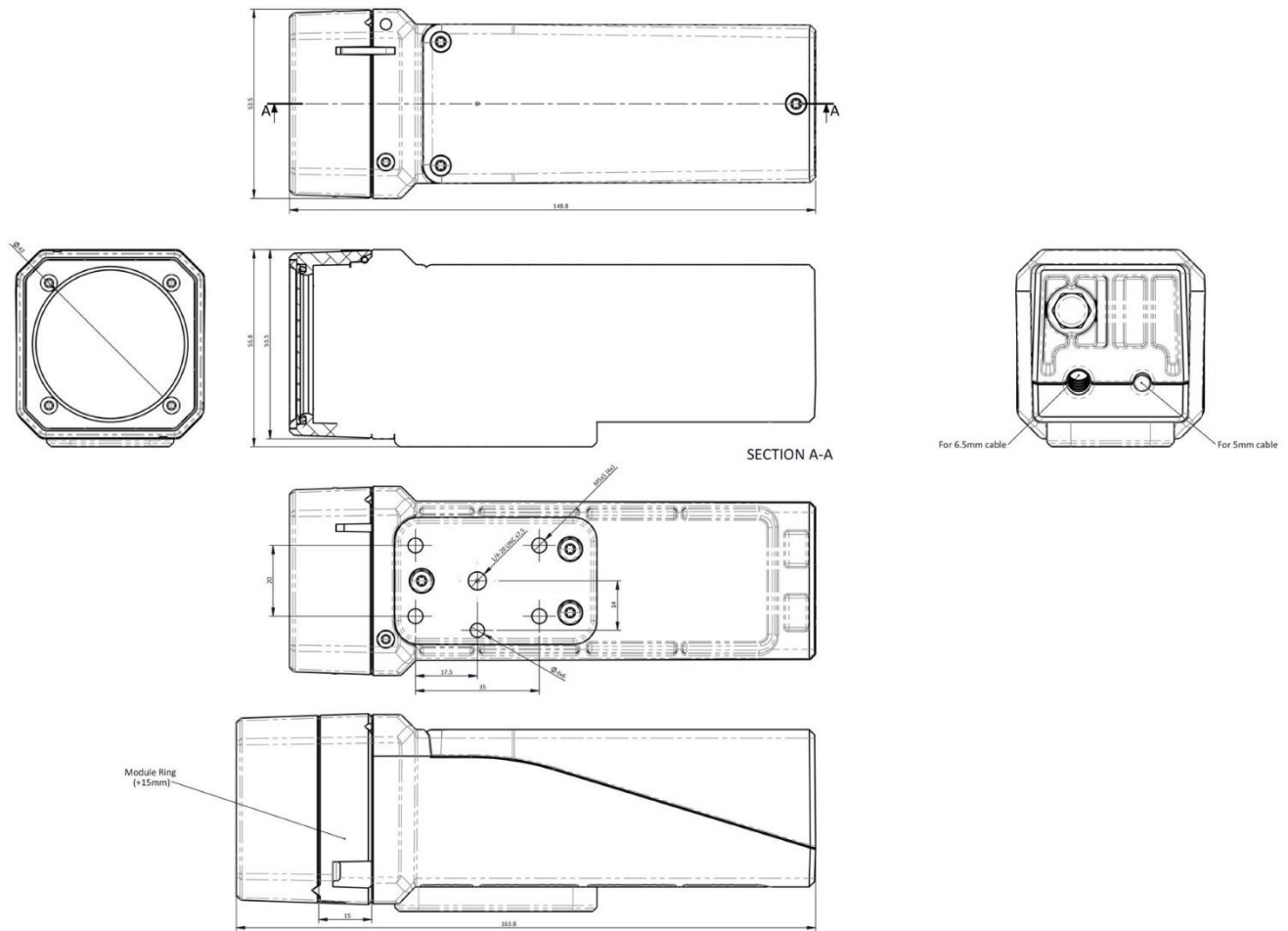
1) Flat screw set needed

2) Camera can only be mounted with the front screw



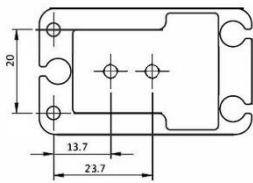
Technical drawing

VA4-MVEC-167-xx



Mounting plates

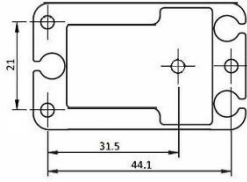
1



Daheng Imaging MER / MER2 USB3
 Daheng Imaging MER / MER2 / MER3 GigE also PoE
 Basler Ace Classic
 Basler Ace U
 Flir Blackfly USB3
 Flir Blackfly GigE
 Flir Blackfly S USB3 (or mounting plate 3 depending on exact model)
 Flir Blackfly S GigE (or mounting plate 3 depending on exact model)
 AVT Mako U
 AVT Mako G
 AVT Alvium U
 Jai Go
 Jai Go-X

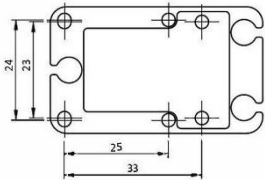


2



Basler Ace 2 Basic
Baslar Ace 2 Pro

3

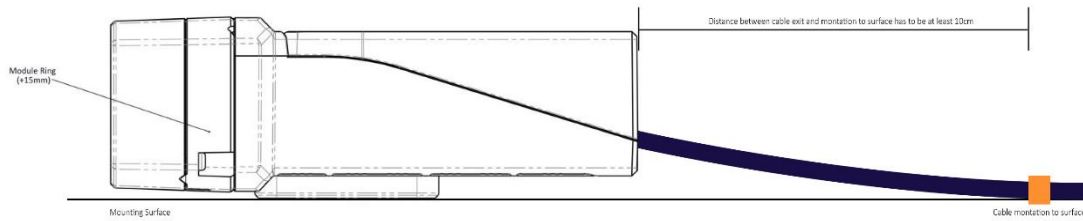


Flir Blackfly S USB3 (or mounting plate 1 depending on exact model)
Flir Blackfly S GigE (or mounting plate 1 depending on exact model)
IDS U1-xxxxCP
IDS U3-xxxxCP
IDS GV-xxxxCP

<div data-bbox="86 1290 135 1590" data-label="Text"> <p>1</p> </div>	<div data-bbox="135 1290 582 1590" data-label="Image"> </div>	<div data-bbox="582 1290 1503 1590" data-label="Text"> <p>Daheng: MER / MER2 series Allied Vision: Manta, Mako, Alvium Jai: Co, Go-X Flir: Blackfly, Blackfly-S V1 & Grasshopper3 Basler Classic, Basler U</p> </div>
<div data-bbox="86 1590 135 1848" data-label="Text"> <p>2</p> </div>	<div data-bbox="135 1590 582 1848" data-label="Image"> </div>	<div data-bbox="582 1590 1503 1848" data-label="Text"> <p>Daheng: ME2P series, ME2S USB, ME2S GigE, MER3 Basler Ace L</p> </div>



Cable mount



For all type of housings the minimal required distance cable before mounting to surface is 10cm. If the cable is under any kind of tension IP67 cannot be guaranteed.

Product number

VA4 - MVEC	-	Series	-	Material	-	Option
		167		ALU		IK
		267		IP		